

**1. Project Title:** Land Use/Land Cover mapping at 1:50,000 scale for NER under NRC

**2. Scope and Objectives:** The goal of the study is to map and monitor the land use/cover on 1:50,000 scale for the whole NER. This mapping/monitoring was done based on a National Standard Land Use/ Cover Classification System which is able to meet the requirements of the various user agencies and also encapsulate the 9- fold classification needs of BES/DES. The objectives of the project are as follows:

- Generate land use/ land cover data base for the period 2005-2006 using three seasons LISS III satellite data.
- Provide a state of land use report for the whole NER with details for each district/state. This can be input for planning exercises at various levels.
- Generate District-wise tables of the NR parameters.

**3. Centre:** North Eastern Space applications Centre (NESAC), Umiam, Meghalaya in collaboration with State Remote Sensing Applications Centre/State Space Applications Centres of NER and few academic institutions.

**4. Funding Agency:** DOS

**5. Study Area:** Entire NER

**6. Brief Methodology:** Multi temporal orthorectified LISS- III data of kharif (Aug –Nov), rabi (Jan- Mar), zaid (April- May) seasons were visually interpreted to address spatial and temporal variability in land cover classes up to level III classes.

**7. Data Used:** Three seasons IRS P6 LISS III data of 2005-06.

**8. Status of the Project:** Completed

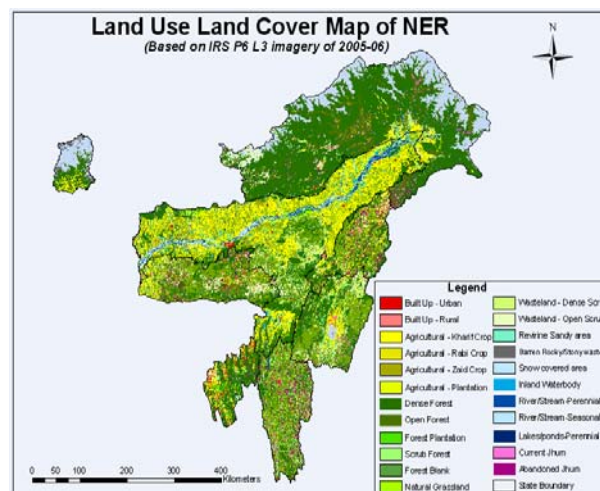


Fig.1 Land Use Land Cover map of NER

Major Land cvoer Class	Area %
Built up	1
Agriculture	15
Forest-Dense	33
Forest-Open	25
Forest-Scrub	7
Wasteland	6
Waterbody	4
Snow	5
Shifting Cultivation	3

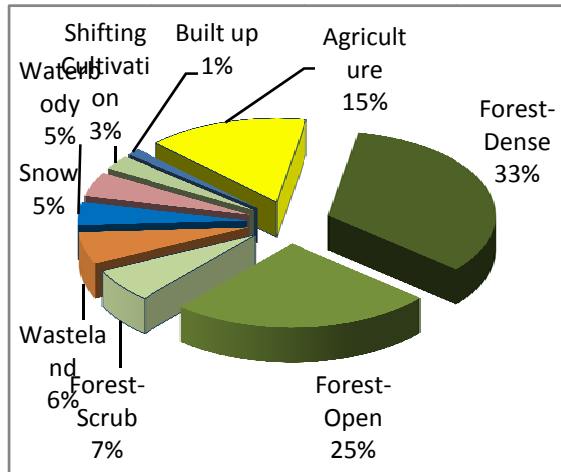


Table 1 : Major land cover classed of NER Fig.2 Major land classes found in NER

**9. Utilization of the project output:** Output of the project is being used by different line departments of NER in preparing their detailed project report (DPR).

**10. Duration:** Three Years (2007 to 2010)